

**Alaska Health Care Commission**  
**May 1, 2009**



---

***Support-for-Service Programs***

***What are the different types?***

***What are their outcomes?***

**Donald Pathman, MD MPH**

**Cecil G. Sheps Center for Health Services Research  
and Department of Family Medicine  
UNC-Chapel Hill**



# Support-for-Service Programs

---

Programs that, in exchange for a period of service in a needy area, provide health practitioners with either . . .

- o educational scholarships
- o educational loans
- o repayment of educational loans
- o direct incentives (\$\$ payments)

# “Typical” (fictitious) Loan Repayment Program

---

- **Where:** Nevada, Department of Health
- **Funding:** state general revenues, \$2M/yr,  
~ 70 practitioners
- **Eligibles:** physicians, dentists, PAs, NPs
- **Benefits:** \$20,000 educational loan repayment each year;  
\$80,000 lifetime max
- **Service required:** work in a designated shortage area;  
see all patients, including Medicaid and uninsured
- **Contract duration:** 2 years; renewable once

# How Many Programs?

---

**Depends what you count:**

- **1996: 41 states funded 82 programs for physicians, PAs, NPs**
- **2008: 34 states offered NHSC “SLRPs”— joint state-federal funding**
- **2004: 29 LRP’s for dentists**

# Total Counts of Practitioners Nationwide

---

<b>State programs (1996, all types)</b> <b>physicians, NPs, PAs</b>	<b>1,676</b>
<b>NHSC (2008, Schol. and LRP )</b> <b>all disciplines</b>	<b>2,790</b>
<b>NHSC joint state-fed (2008, LRP)</b> <b>all disciplines</b>	<b>557</b>
<b>IHS (2008)</b> <b>all disciplines</b>	<b>~250</b>

# Types of Support-for-Service Programs

---

Type	Who/When	Use of Funds	Service	Penalties
Scholarship	Students			
Loan service opt	Students			
Loan Repayment	Practicing			
Direct Incentive	Practicing			

# Types of Support-for-Service Programs

---

Type	Who/When	Use of Funds	Service	Penalties
Scholarship	Students	Training	Required	Heavy
Loan service opt	Students	Training	Optional	Modest
Loan Repayment	Practicing			
Direct Incentive	Practicing			

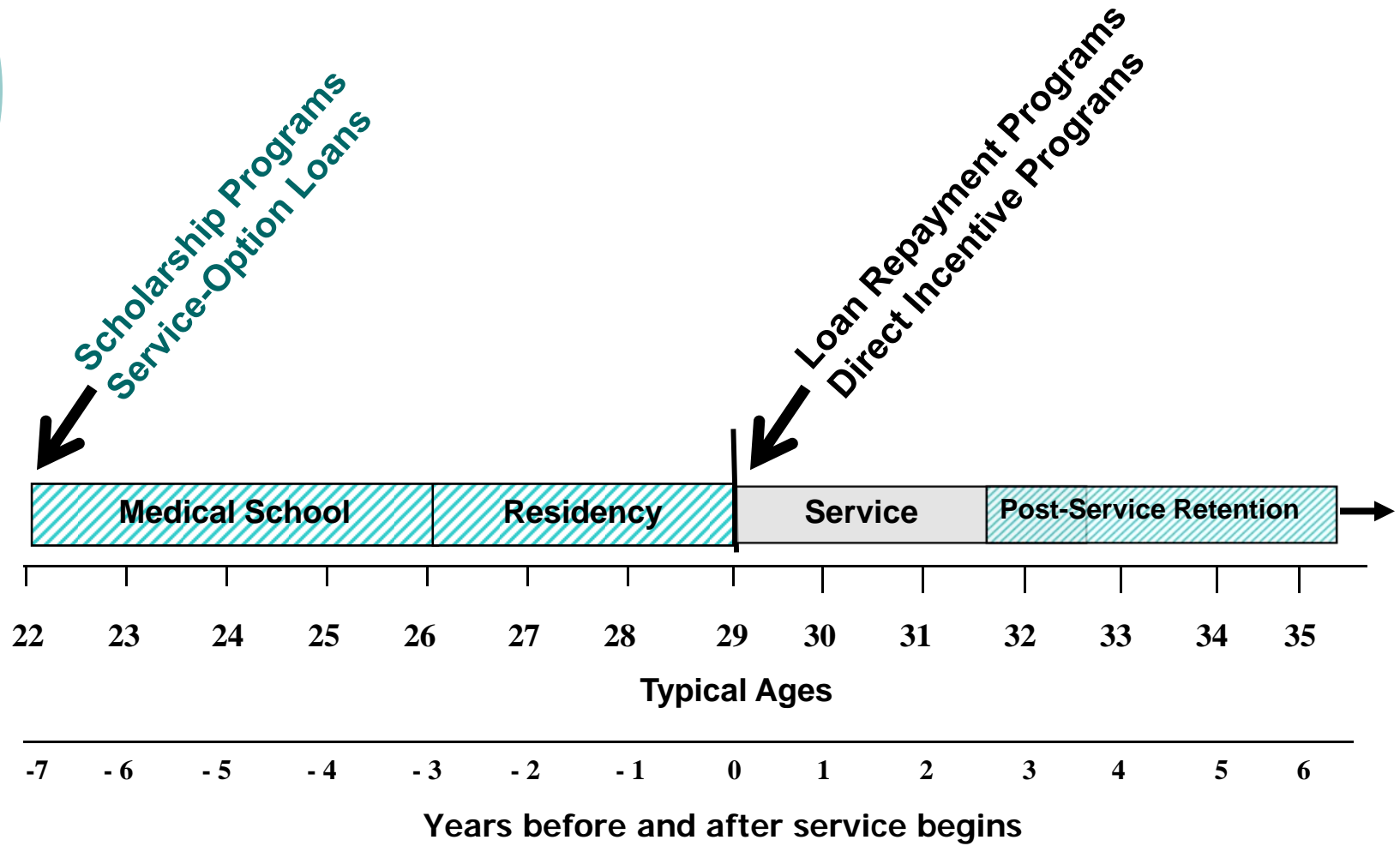
# Types of Support-for-Service Programs

---

Type	Who/When	Use of Funds	Service	Penalties
Scholarship	Students	Training	Required	Heavy
Loan service opt	Students	Training	Optional	Modest
<b>Loan Repayment</b>	<b>Practicing</b>	<b>Repay loans</b>	<b>Required</b>	<b>None</b>
<b>Direct Incentive</b>	<b>Practicing</b>	<b>Anything</b>	<b>Required</b>	<b>None</b>



# When Physicians Commit to Programs of the Various Types



# Outcomes of 64 State Programs for Physicians

---

	# prog.	
Scholarship	24	
Loan w/service opt	9	
Loan Repayment	24	
Direct Incentive	7	

# Outcomes of 64 State Programs for Physicians

---

*Which has highest service completion rate?*

	# prog.	% who serve	
Scholarship	24		
Loan w/service opt	9		
Loan Repayment	24		
Direct Incentive	7		

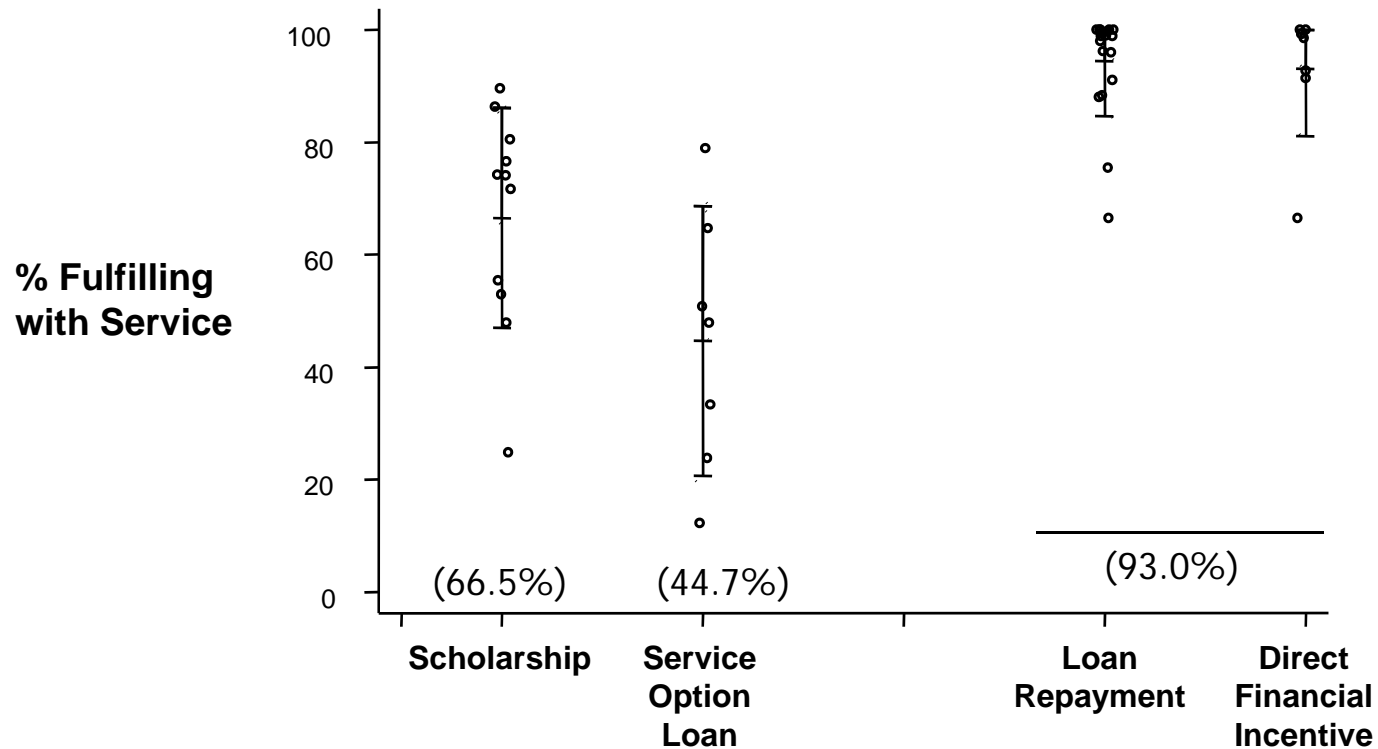
# Outcomes of 64 State Programs for Physicians

---

	# prog.	% who serve	
Scholarship	24	63	
Loan w/service opt	9	41	
Loan Repayment	24	94	
Direct Incentive	7	93	

---

# Programs' Service Obligation Completion Rates (n=64)



Bars denote group means +/- standard deviations;  $p < .001$

# Outcomes of 64 State Programs for Physicians

---

*Which has more satisfied participants?*

	# prog.	% who serve	% very satisfied
Scholarship	24	63	
Loan w/service opt	9	41	
Loan Repayment	24	94	
Direct Incentive	7	93	
Non-Obligated	NA	NA	35

# Outcomes of 64 State Programs for Physicians

---

	# prog.	% who serve	% very satisfied
Scholarship	24	63	35
Loan w/service opt	9	41	52
Loan Repayment	24	94	47
Direct Incentive	7	93	39
Non-Obligated	NA	NA	35

# Outcomes of 64 State Programs for Physicians

## *How long retained?*

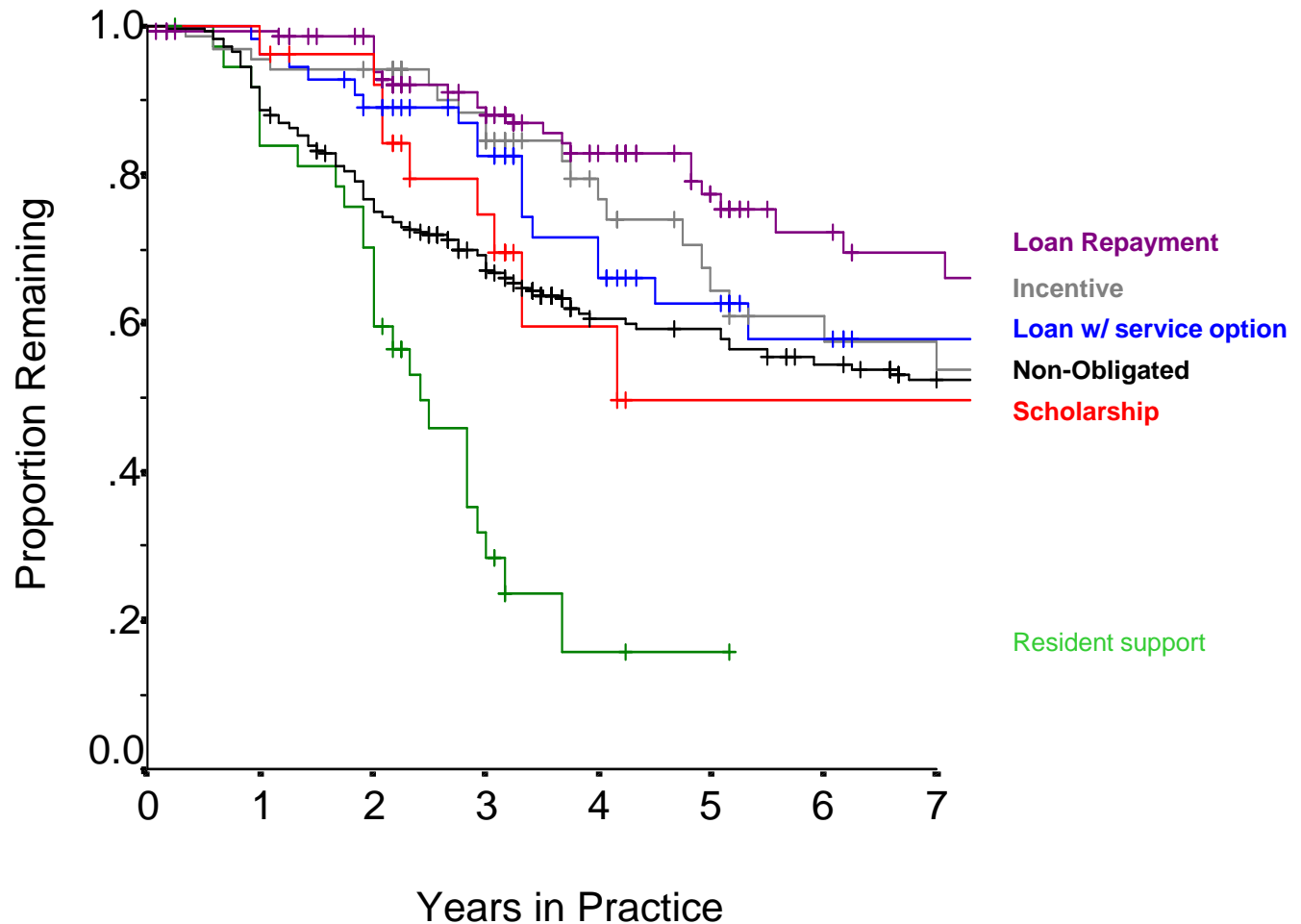
	# prog.	% who serve	% very satisfied	% retained 6 yrs
Scholarship	24	63	35	
Loan w/service opt	9	41	52	
Loan Repayment	24	94	47	
Direct Incentive	7	93	39	
Non-Obligated	NA	NA	35	55



# Outcomes of 64 State Programs for Physicians

	# prog.	% who serve	% very satisfied	% retained 6 yrs
Scholarship	24	63	35	30
Loan w/service opt	9	41	52	65
Loan Repayment	24	94	47	69
Direct Incentive	7	93	39	57
Non-Obligated	NA	NA	35	55

# Service-Site Retention of Physicians in State Programs



# Community Characteristics by Type of State Program, 1996

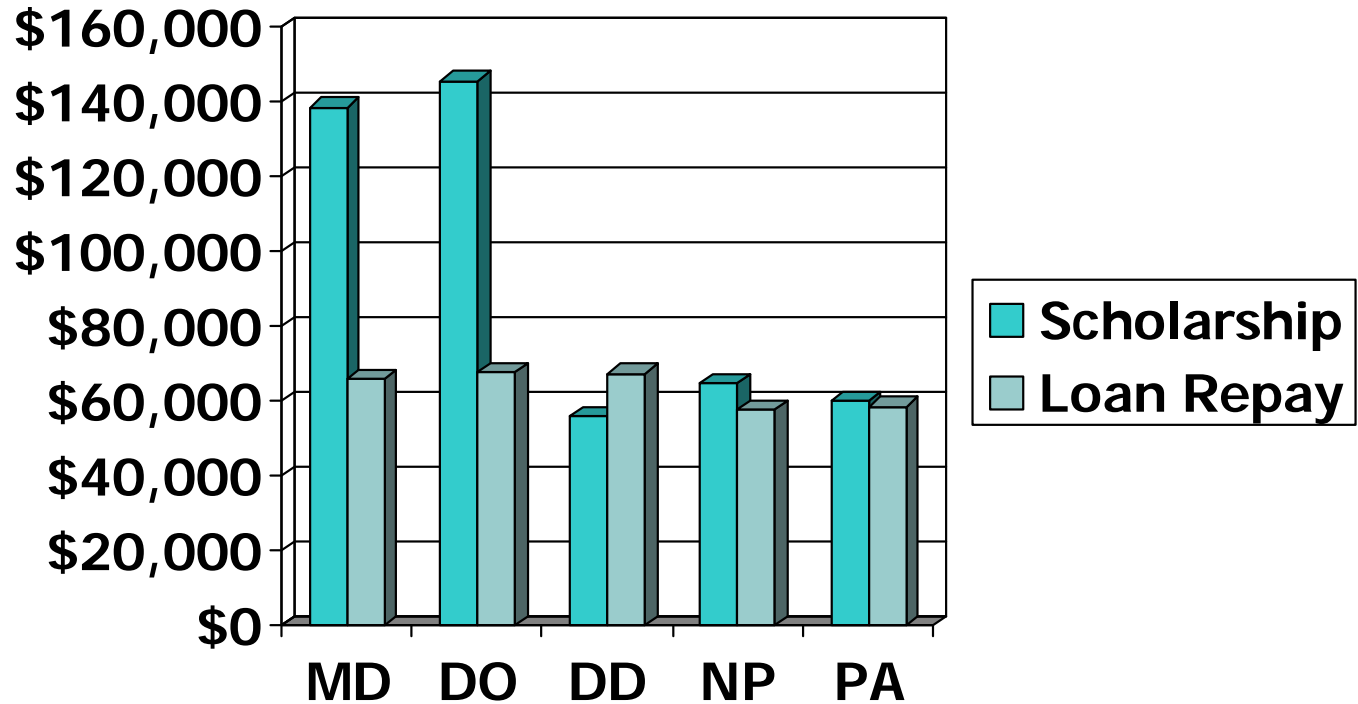
---

	Median cnty PC doc- to-pop ratio	Av % Pts w/Medicaid or uninsured
<b>Scholarship</b>	<b>82</b>	<b>41%</b>
<b>Service-Option Loan</b>	<b>76</b>	<b>43%</b>
<b>Loan Repayment</b>	<b>91</b>	<b>48%</b>
<b>Direct Fin Incentive</b>	<b>64</b>	<b>55%</b>

# LRP vs. Scholarship Program Costs

---

2001 NHSC costs



NHSC data

# Overview of benefits/weaknesses of the program types (mix is best)

---

## o Service option loan

- + target students; doesn't force service; good retention
- only target AK natives entering med school (~40/yr?); must accept that half will pay off loan with \$\$

## o Loan repayment

- + target 58K recent grads nationwide w/ debt over \$50K; good service completion rates and good retention
- compete with many others offering LRP

## o Direct Incentive

- + target 750K physicians nationwide (older, w/o debt); can restrict placements to very needy communities
- less familiar

# Questions?

---

