

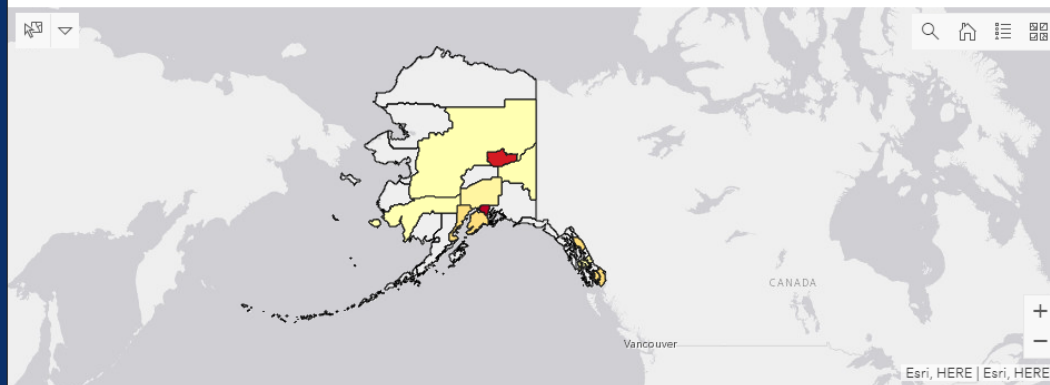
Alaska COVID-19

Dr. Anne Zink, Alaska's Chief Medical Officer
April 8, 2020

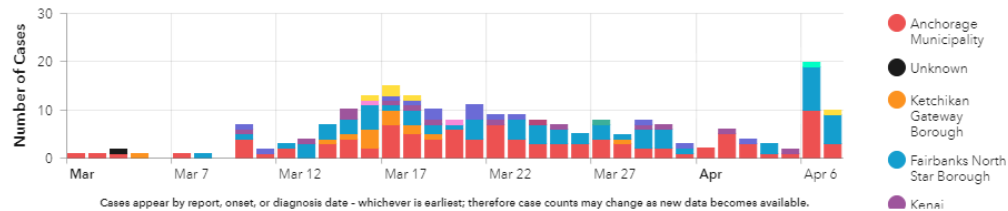




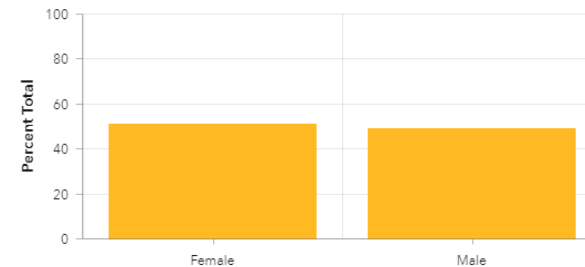
AK COVID-19 Cases by Residency



Laboratory Confirmed Cases of COVID-19

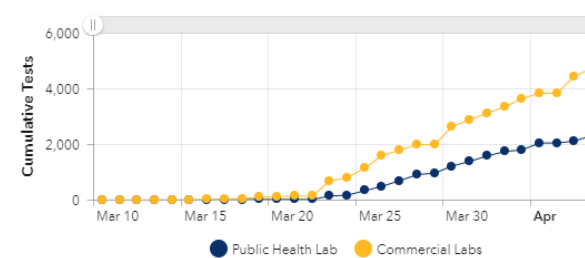


Total Statewide Cases by Gender



Percent by Gender

Cumulative Tests by Day (Public Health and Commercial Labs)



Cumulative Tests

Tests by Day

Combined Cumulative

Combined Daily

Total Cases

♥ 226

Cumulative (includes recovered cases)

Total Cases

New Cases

Recovered Cases

♥ 32

Statewide Totals

Total Hospitalizations

🏥 27

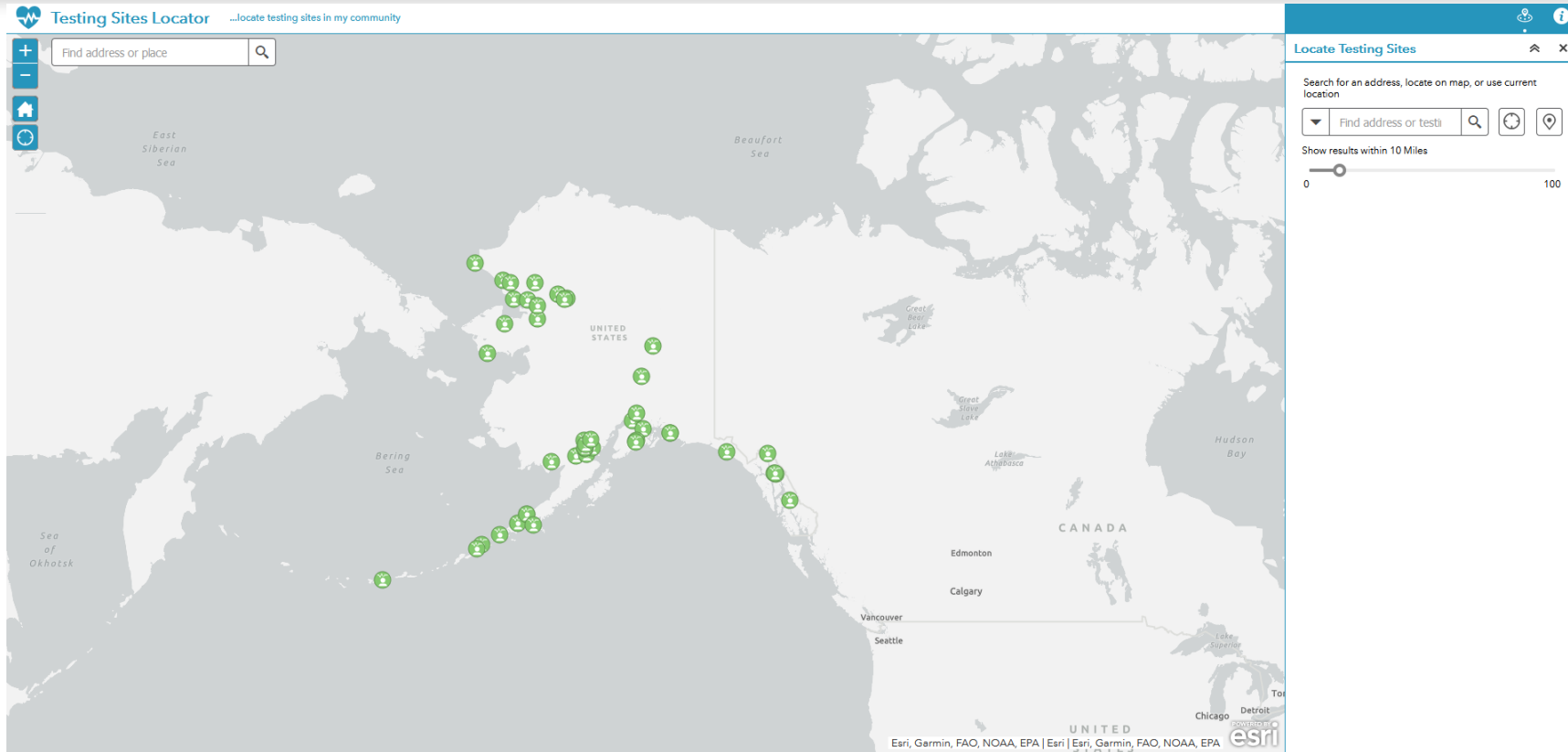
Cumulative (does not reflect current stays)

Deaths

⚠️ 7

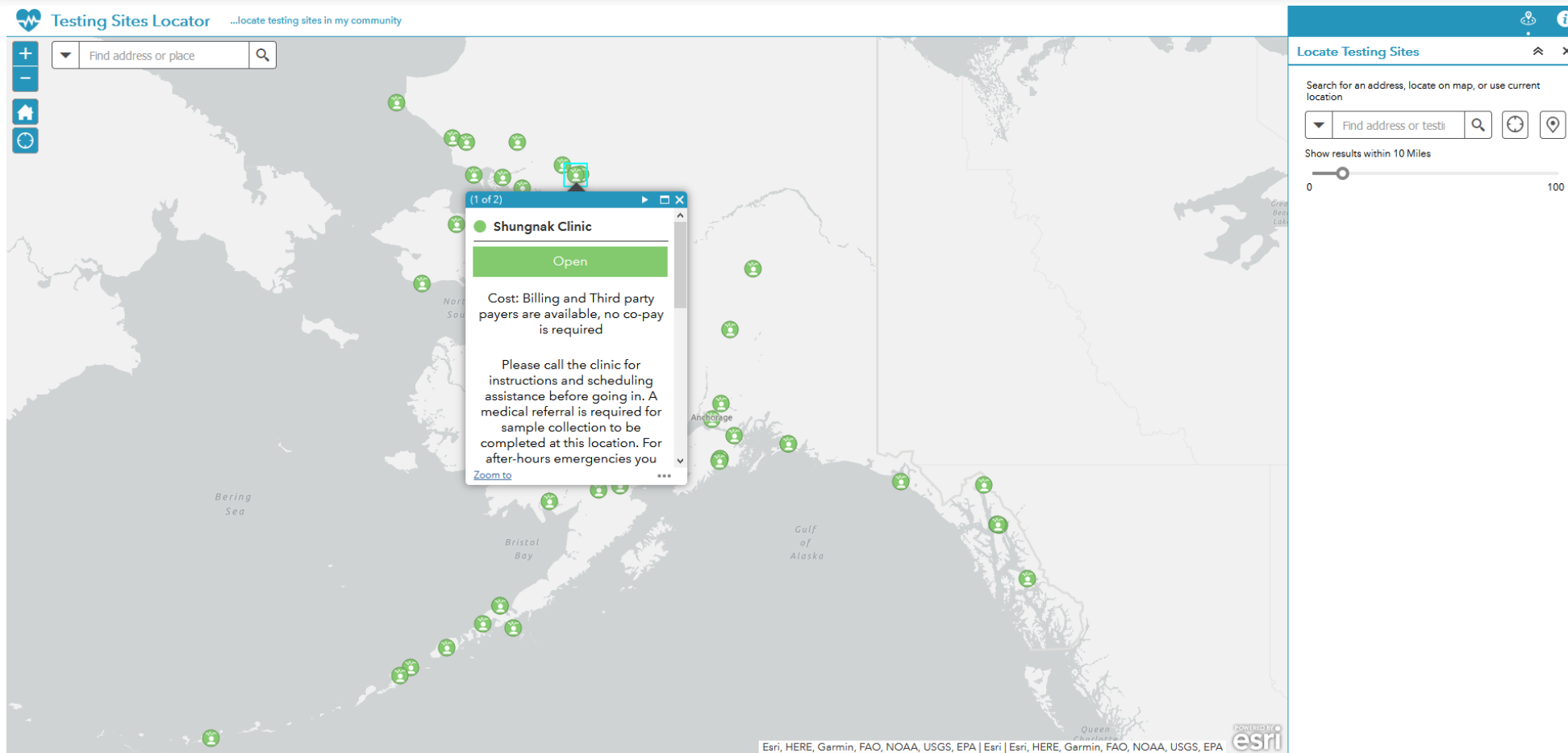
Statewide Totals

Case Counts, April 7, 2020



Enter an address in either the field on the top left or the top right to place a pin on the map at your location. If you are on a device with location services activated you can select the crosshair button below the home button on the top left of the screen or to the right of the address field on the right side of the screen. You can also select the location pin button to the right of the address and crosshair to drop a pin on the map to select your location.

New: Testing Locations



You can also manually view each testing location to review their available information without utilizing the location/directions services.

Updated COVID-19 Testing Procedures

New criteria

Patient Criteria	Send Specimens to
<ul style="list-style-type: none"> Hospitalized Patients, residents, and staff in any setting where healthcare services are delivered (e.g., hospital, department of corrections, mental/behavioral health clinics, long-term care facilities, assisted living facilities) Persons and staff in other institutional or congregate settings (e.g., corrections, juvenile detention centers, homeless shelters) First responder (e.g., police, fire, paramedic) Household member of a health care provider Known close contact to a confirmed case of COVID-19 in the past 14 days An outpatient who is at increased risk for serious illness (i.e., age ≥60 years or has one or more select chronic medical conditions, such as heart disease, lung disease, diabetes, or immunocompromised) 	ASPHL*
<ul style="list-style-type: none"> Out-of-state travel in the past 14 days Persons working in critical infrastructure occupations (e.g., grocery stores, pharmacies, restaurants, gas stations, public utilities, etc.) Any other patient as determined by clinical discretion Asymptomatic persons 	Other Laboratory (e.g., Commercial)
	DO NOT TEST

*Alaska State Public Health Laboratory supplies are limited, so please follow the preferred laboratory guidance closely.

Old criteria

Priority Level	Patient Criteria	Send Specimens to
High	<ul style="list-style-type: none"> Hospitalized Lives in a long-term care facility Health care worker or first responder (e.g., police, fire, paramedic) Known close contact to a confirmed case of COVID-19 in the past 14 days Travel in the past 14 days to a location where community transmission of COVID-19 is occurring[‡] 	ASPHL*
<i>Individuals not meeting any of the above criteria:</i>		
Medium [†]	<ul style="list-style-type: none"> An outpatient who is at increased risk for serious illness (i.e., age ≥60 years or has one or more select chronic medical conditions, such as heart disease, lung disease, diabetes, immunocompromised) 	Commercial laboratory
Low	<ul style="list-style-type: none"> Any other patient as determined by clinical discretion 	
DO NOT TEST	<ul style="list-style-type: none"> Asymptomatic persons 	DO NOT TEST

*ASPHL laboratory supplies are limited, so please follow the preferred laboratory guidance closely.

[‡]This situation is rapidly changing, please refer to [CDC](#), [WHO](#), and other online resources to make this determination.

[†]Clinical discretion required.

Rapid testing: Abbott's ID NOW

Community
Juneau
Cordova
Ketchikan
Kodiak
Petersburg
Juneau
Dillingham
Valdez
Homer
Seward
Soldotna
Bethel
Kodiak
Naknek
Skagway
Unalaska
Deadhorse
Gakona
Glennallen
Healy
Delta Junction
Kenai
Seward
Soldotna
Talkeetna
Wasilla
Palmer

- DHSS received 50 rapid testing machines and is distributing 44 of these to 27 communities across the state.
- The remaining six will be ready to sent to communities in need.
- Total of 5,016 tests; 208 kits, each kit has 24 individualized complete tests (swab, sample receiver and test cartridge)
- DHSS coordinated with the Alaska Native Tribal Health Consortium to determine which communities needed tests, prioritizing areas that were off the road system or on the road system but 100 miles from the nearest testing facility.
- DHSS also took into consideration areas impacted by an increase in seasonal workers coming into the community from other areas.



Abbott's ID NOW™ machine Photo courtesy of Abbott

Total Bed and Ventilator Capacity as of April 7th, 2020								
Economic Region	Hospitals	Total Beds Capacity	Total Inpatient Beds	Available Inpatient Beds	Total ICU Beds	Available ICU Beds	Total Ventilators	Available Ventilators
Anchorage/Mat-Su*	8	1493	1201	649	127	66	195	168
Gulf Coast	5	154	127	39	8	5	18	18
Interior	2	116	103	41	13	1	19	18
Northern	3	120	43	21	0	0	15	15
Southeast	5	136	121	49	21	5	40	40
Southwest	3	123	82	19	10	0	11	11
Total	26	2142	1677	818	179	77	298	270
*Latest report for one hospital was on April 6th, 2020								

Total Bed and Ventilator Capacity

Data from April 7, 2020

ASHNA data coming soon to dashboard

Medical Supplies – asked and received

Supply	Asked from Federal Government	Received from Federal Government
Ventilators	60	60
Face Shields	139,766	6,144
Gloves	317,281	121,100
Gowns	1,041,516	9,444
N-95 Respirators	3,117,328	165,160
Surgical Masks	1,113,906	175,700
Abbott Test Kits	50	50
Powered Air Purifying Respirators (PAPRs)	50	50



Cloth face coverings



New DHSS Webpage: Cloth face coverings

<http://dhss.alaska.gov/dph/Epi/id/Pages/COVID-19/coveryourface.aspx>