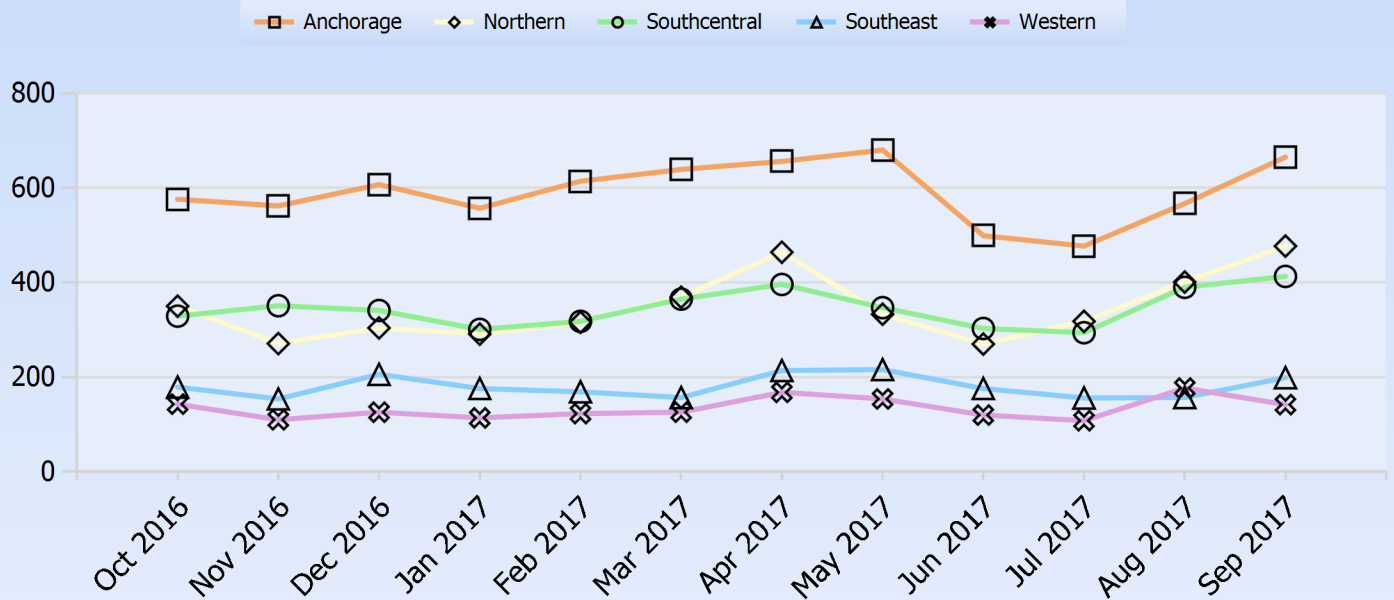


# Maltreatment Reported to the Office of Children's Services

Data extracted Friday October 13, 2017 from Alaska's ORCARPT database.

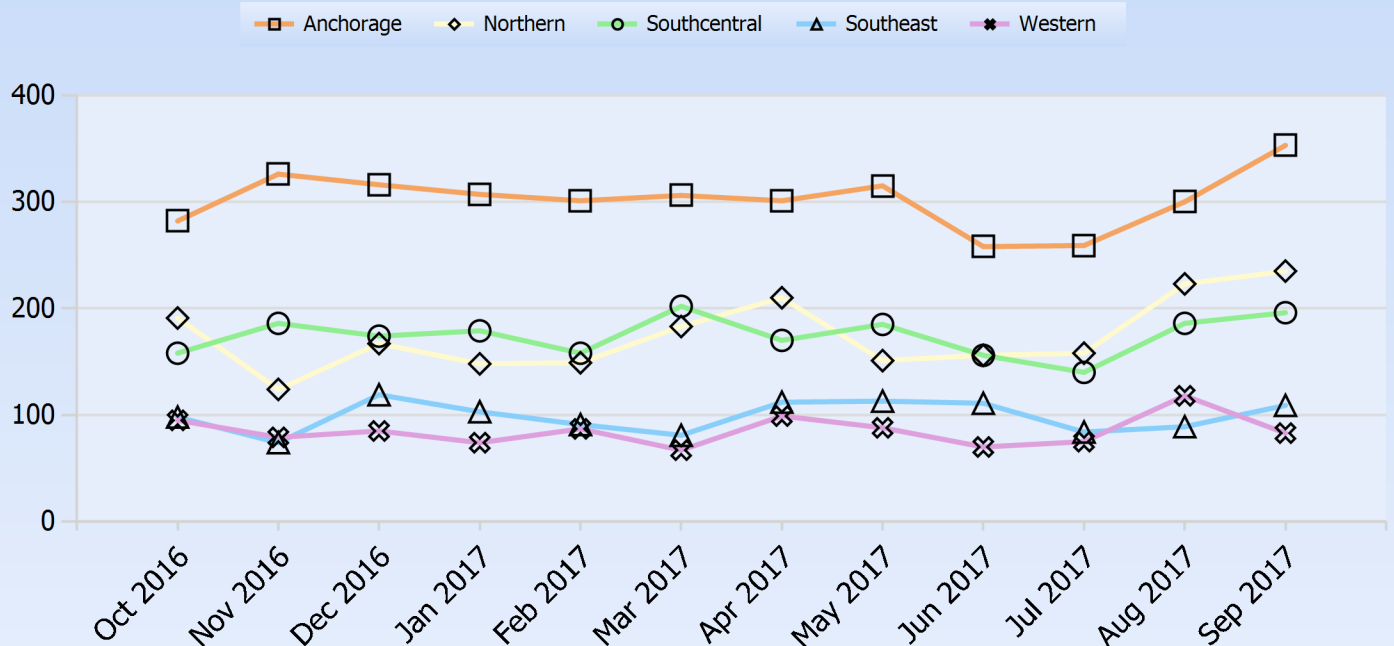
Reporting period is the most recently completed Twelve Months.

## Count of All Protective Service Reports Received during the last Twelve Months



Updated October 13, 2017

## Count of All Protective Service Reports Screened In during the last Twelve Months



### Percent of All Protective Service Reports Screened In during the last Twelve Months

■ Anchorage    ◆ Northern    ● Southcentral    ▲ Southeast    ✕ Western

