

Evaluating Potential Close Contacts (students only)

School setting: **WITHOUT** correct and consistent mask use*

Is potentially exposed student fully vaccinated? **



STAYS IN SCHOOL

When 6 feet or less from the infected student, the potentially exposed student stays in school, fully masked indoors. Recommend testing 3-5 days after exposure.



QUARANTINES AT HOME ***

When 6 feet or less from the infected student, the potentially exposed student quarantines **AT HOME** for 10 days (returning on day 11) after exposure **OR** 7 days after exposure (returning day 8) **AND** tests negative day 5 or later post-exposure

These guidelines DO NOT apply to:

- Symptomatic children, vaccinated or unvaccinated
- Children more than 6 feet apart from the infected student.
- Children who are within 90 days of recovering from COVID-19.

* Correct and consistent mask use means both the infected and potentially exposed student(s) wore masks that fit snugly on the face and were made of more than 1 layer.

** Fully vaccinated means the student is at least 2 weeks out from their second dose of vaccine.

*** In unvaccinated populations, the entire class may require quarantine.

NOTE: Infected students should isolate at home.

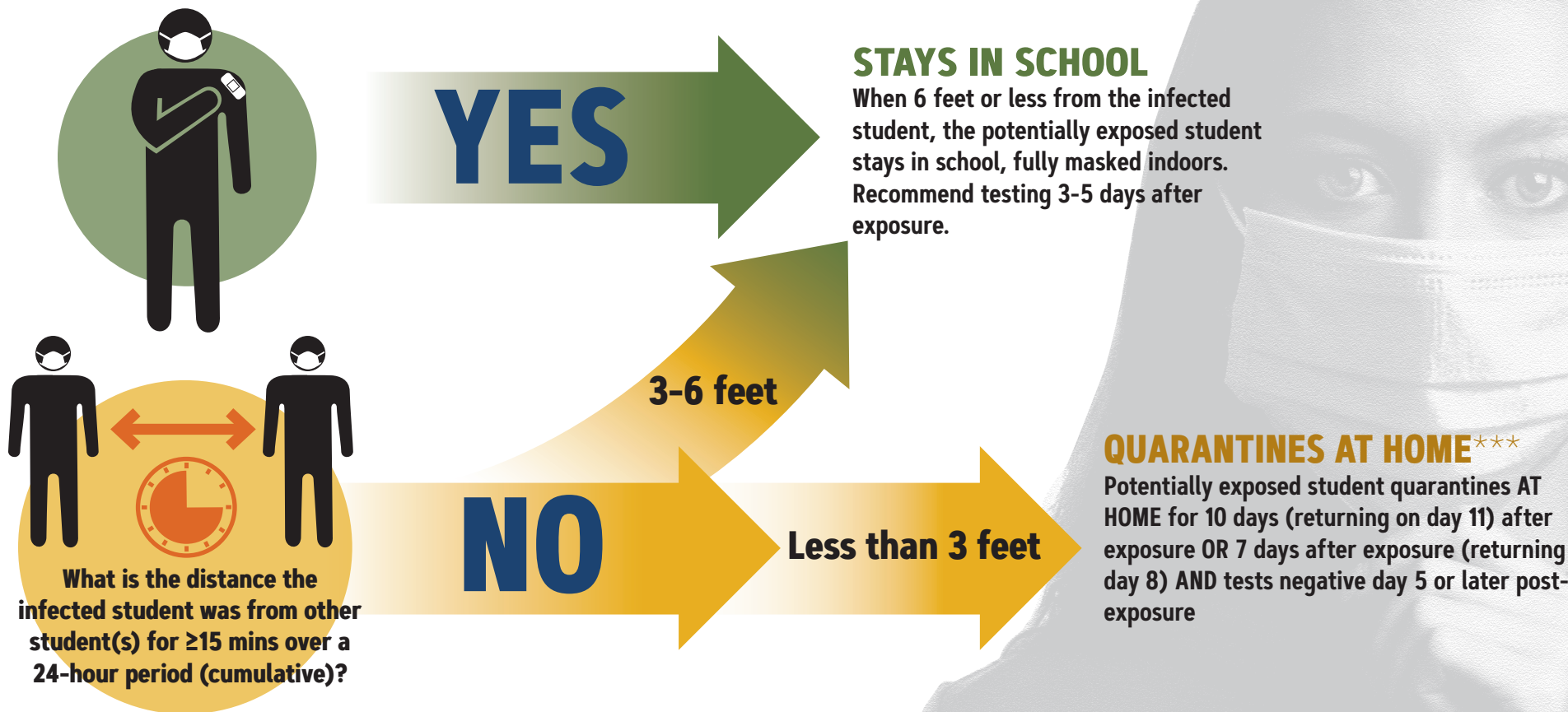


2021-2022 In-Person Learning Guidelines and Resources

Evaluating Potential Close Contacts (students only)

School setting: **WITH** correct and consistent mask use*

Is potentially exposed student fully vaccinated? **



These guidelines DO NOT apply to:

- Symptomatic children, vaccinated or unvaccinated
- Children more than 6 feet apart from the infected student.
- Children who are within 90 days of recovering from COVID-19.

* Correct and consistent mask use means both the infected and potentially exposed student(s) wore masks that fit snugly on the face and were made of more than 1 layer.

** Fully vaccinated means the student is at least 2 weeks out from their second dose of vaccine.

*** In unvaccinated populations, the entire class may require quarantine.

NOTE: Infected students should isolate at home.



2021-2022 In-Person Learning Guidelines and Resources